

LIVING CONCEPT ENGINEERING  
CONSULTANT



Through Design, Innovation, and Inspiration.

Architecture, Structure, M.E.P, Interior



# Company Profile

- ▶ Empowering innovation, inspiring progress, and designing the future – together, we're not just a company but a catalyst for change.





Architecture



Structure



M.E.P



Interior Design



Project Management

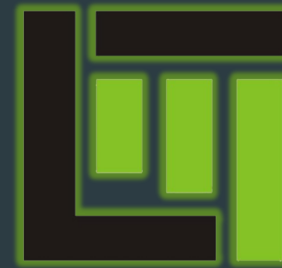


Supervision



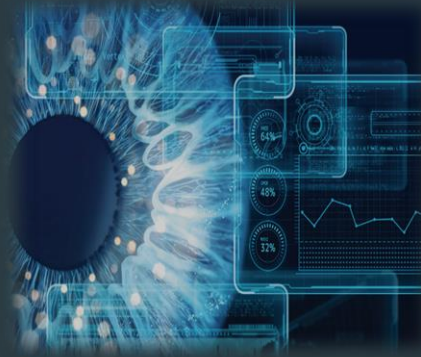
# ABOUT US:

Living Concept is a leading engineering consulting firm dedicated to providing innovative solutions to complex challenges across diversity industries. With a team of seasoned professionals and a commitment to excellence, we offer comprehensive services tailored to meet the unique needs of each project. From conceptualizing to execution, we leverage our expertise to deliver cost-effective, efficient, and sustainable solutions that exceed client expectations. At Living Concept we're not just engineers – we're partners in your success, dedicated to building a better future through creativity, collaboration, and unwavering dedication to quality.



# OUR FOCUS:

Our Vision at Living Concept Engineering is to redefine the landscape of engineering consultancy by seamlessly blending cutting-edge technology, unparalleled expertise, and unwavering dedication. We aspire to be the trusted partner in driving forward transformative projects that shape a sustainable, resilient, and prosperous future for generations to come.

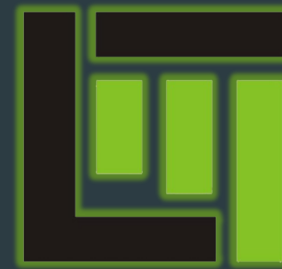


At Living Concept Engineering, our mission is to provide bespoke engineering solutions that exceeds expectations, empower sustainable progress and elevate communities worldwide. Through collaborative expertise, innovative thinking, and unwavering integrity, we aim to engineer a future where every challenge is met with ingenuity, every project is a testament to excellence, and every client's vision is realized beyond imagination.



# OUR TEAM

---



# Chairman



**Akhtar H.**

It is with great pride that I welcome you to **Living Concept Engineering Consultancy's** profile, a testament to our journey, achievements, and aspirations.

As a chairman, I am humbled by the dedication and talent of our team, whose relentless pursuit of excellence drives our continued growth and success. Together, we've tackled challenges, embraced opportunities, and forged lasting partnerships around the globe.

As we navigate an ever-evolving landscape, we remain steadfast in our commitment to delivering exceptional solutions, exceeding expectations, and making a positive impact on society.

Thank you for your continued support and trust in **Living Concept Engineering Consultant**. Together, let's continue to innovate, inspire, and make a difference.

# Managing Director



**Hidayat Ali  
Jaffar Shah**

It is with great pleasure and pride that I extend a warm welcome to you to explore the essence of **Living Concept Engineering Consultants** through our profile.

At the heart of our journey lies a commitment to excellence, innovation, and integrity. As a Director, I have had the privilege of witnessing firsthand the dedication and passion of our team, whose tireless efforts have propelled us to new heights of success.

As you navigate through our profile, I invite you to discover the essence of **Living Concept Engineering Consultants** – a future shaped by innovation, sustainability and a relentless pursuit of excellence. With a rich legacy behind us and unwavering focus on the road ahead, we are poised to redefine industry standards and exceeds expectations.

Thank you for your trust in **Living Concept Engineering Consultants**. Together, we will shape tomorrow.



# Architectural Division

---



# Pier Maria Giordani

Senior Architect/Concept Designer

Born in 1969, Pier has an PhD in Architectural Composition at the Politecnico School in Milan. Pier has been Architectural Composer of the Matter at the University of Parma and then from 2002 to 2010 at the Politecnico School of Milan. He has collaborated with the architect Aurelio Cortesi in many projects at the beginning of his career. From 2000 to today, many of his achievements are in Italy and abroad: urban spaces, buildings and interior. In 2011 he was ranked fourth in the competition for the redevelopment of Piazza Ferdinando di Savoia in Peschiera del Garda. In 2009 he was appointed by the Municipality of Parma for the upgrading of Piazza Corridoni, in the historic center of the city. In 2008, he was ranked fourth in the Competition for Urban Reconstruction of Piazza del Malgher in Pozza di Fassa. In 2006, he was ranked third in the “Competition of Ideas for the Urban Reconstruction of Piazza Micheli in Berceto”. In 2005 he participated in the Third International Seminar on Museography. International Award for Architecture and Archeology.





## Chen Zhen

Senior Architect

Chen Zhen was born in Shandong, China in 1979. Since 2001 he has started his career in China where he has collaborated in the development of many architectural and urban projects. He obtained the professional qualification of architect and urbanist in 2006. Since 2011 he has been co-founder of Recs Architects (based in Milan, Parma, Belo Horizonte, Chengdu and Dubai), which follows architectural projects in China, Europe, Middle East and Brazil. He has been Ph.D. at the Politecnico di Milano in architectural composition in 2012. Since 2013 he has become the contract professor at the School of Civil Architecture, Politecnico di Milano, teaching design lab course and theoretical course “Project of Architecture and Cities in China”. He has published many academic articles and has attended numerous international conferences as rapporteur.



## Rajab Ali

Architect

Rajab Ali has conceived and designed elevations for various Arabian Villas along with the Interior Designing of Villas. Not only limited to these but he also has provided site supervisions for the projects all while submitting the drawings as such. Rajab has assisted and advised Clients for contractor negotiations and has shown great proficiency on the matter. He is also a registered architect on multiple municipality bodies all over UAE which includes, Municipality of Ras Al Khaimah, Municipality of Dubai, and on Society of Engineers. Not only this, but Rajab is also a member of The American Institute of Architect (AIA), U.S.A publishing is very own research paper in “Dynamism in Architecture, The Architeneer Tower”.

# Structural Division

---



# Hidayat Ali Jaffar Shah

Senior Structural Engineer

Hidayat Ali was born in Pakistan in 1994, starting off his career at Pakistan and slowly expanding his visions all the way to UAE. Mr. Hidayat is an Trakhees Approved Engineer with a broad experience of field work which includes Inspection Of Construction Materials - Quality checking, Quantity Take-off, As Built Drawings Preparation, Checking Site Execution work and so on. He is familiar with Residential/ Commercial Villa Construction, Road & Transportation works, and Infrastructure works as well. He's highly skilled in structural analysis & design of RCC Structure and Site Supervision.





# Mohammad Farouk

Structure Designer/Project Engineer

Mr. Farouk is an engineer with over 4 years of experience in the field of civil and architectural engineering. Having excellent knowledge of design and visualization software and proficiency in site layout, he has worked on structural and interior designs, site and project management, infrastructure project and technical office engineering. Farouk has also managed, designed, developed and created small scale through large scale construction projects in safe and sustainable manner. He not only carried out technical and feasibility studies and draw up blueprints that satisfy technical specification.

# Leo Kingston

Structural Engineer

Born in 1991, Leo has over 10 years of experience, and is a licensed structural engineer (G+M+4). He is expert at analyzing configurations of the basic structural components of a building or other structure. He is capable of calculating the pressures, stresses and strains that each component, such as beam or lintel. He also has knowledge about considering strength of various materials to see their inclusion which may necessitate a change of structural design. Leo also examines structure at risks of collapse advising how to improve by liaising with other designers, including architects, to agree in safe designs and their fit aesthetic concept of construction.







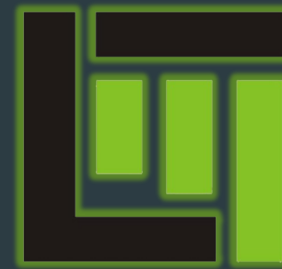
# Tsion Bekele

Structure Engineer

Industrious Project Engineer with over 6 years of experience in the construction industry, Tsion is a proven expertise in project management, health & safety enforcement, quality assurance, and BIM Modeling. She has collaborated with architects and structural engineers to ensure precise representation of design concepts. Enforcing health and safety protocol, minimizing accidents and injuries by reviewing designs, plans and reports for continuous compliance with project specifications has been a specialty of Tsion. She has created detailed project schedules, conducted site visits for progress check and bottleneck eliminations.

# Interior Design Division

---





## Amanda Franzoni

Interior Designer

Amanda Franzoni was born in Italy in 1991. She graduated from the Faculty of Architecture at the Politecnico di Milano, in the Mantova branch. Her academic journey has been closely tied to Portuguese architecture, further enhanced by a year of study at the faup in porto. She has practiced her profession in various Italian Cities, including completing internship sanctioned by the Order of Architect at the Superintendency, which significantly enriched her professional experience.

She has been involved in projects related to high-rise buildings, as well as low and middle-rise structures, and residential projects such as private villas, thereby increasing her knowledge of the regulatory requirements concerning such projects.



## Silvia Lasagna

Interior Designer

Silvia has a Master's Degree in Economics and Business from the University of Parma with one year experience at Cardiff University (UK). She held the role of Category Planner for Unilever at Mindshare Milano and was also Jil Sander collection coordinator at OLG for 7 years. Silvia also has experience in Sales Management in the B2B sector following her experience of 8 years at Cerve SpA, leading company in the glass processing industry. Since 2022 she is Chief Operating Officer at Recs Architects, with a specific focus on the topic of innovative materials, the relationship with external partners and methodologies for approaching modern architecture. She also takes care of Business Development in Middle East market.



## Saud Farooq

Architect/Interior Designer

Saud is an Experienced and versatile Architect/Designer with a track record of successfully conceptualizing, designing, and overseeing diverse architectural projects. Expertise in translating client needs into innovative solutions within budget and timeline constraints. He is proficient in advanced design software, creating detailed drawings, 3D models, and presentations. He is also experienced in conducting site surveys, taking accurate measurements, and preparing rough drawings. Saud has successfully completed multiple projects for diverse clients and achieving a client satisfaction rate.



## Wai Wai Phyo

Architect/Interior Designer

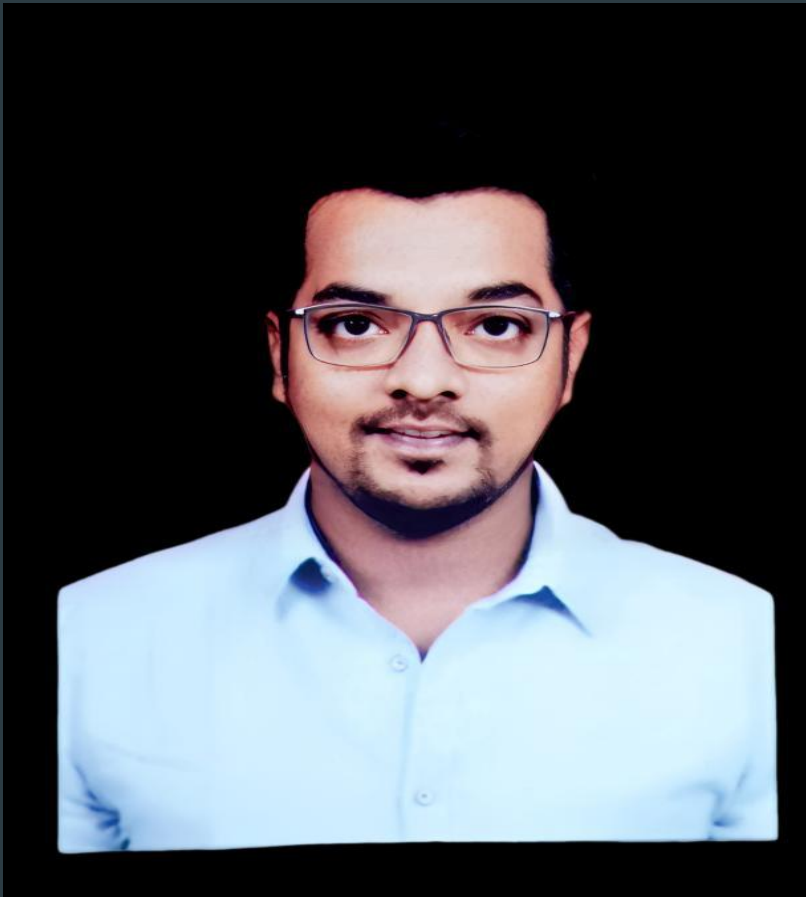
Dedicated to crafting engaging and innovative environments through a fusion of artistry and technological expertise. Phyo constantly make certain that my work is well-organized, detailed, and efficient. She maintains a proactive approach to enhancing my skills and knowledge, staying abreast of emerging building trends and technologies.. She has had the experience of collaborating on a wide range of events. Conceptualizing and designed themes, décor elements, and layout for corporate galas, product launches, and social gatherings. Collaborated closely with clients to understand their vision, and preferences and managed event budgets. Phyo has led the design team and overseeing the execution of events from conception to completion, ensuring all the elements are executed.



## Laiba Tariq

Interior Designer

Laiba Tariq, an experienced Interior Designer known for successful project management and a commitment to excellence, she's a distinguished professional in the field. Expertise at crafting captivating designs that harmonize aesthetics and functionality. She has supported multiple design presentations and visualizations and managed interior design budgets all while assisting in space planning and layout designs. Laiba oversees the project from start to finish to incorporate sustainability and eco-friendliness on the project. She has solved design challenges, addressed engineering considerations and sought professional development opportunities.



## Shreekant Ghogare

Interior Designer

An enthusiastic interior designer with excellent style, space and conceptualization versatile experience of 13 years in residential and commercial interior fit-out developments. Shreekant interprets client demands and conveys ideas through inspiring drawings, solution oriented and presentations for increased sales. He has an history of successfully coordinating with vendors and managing sub-contractors with ease. Capable of preparing completed ID Execution with fine details and complying with ID time deadlines for deliverables and catering to executive clients to determine décor needs and project scopes covering space planning, layout and color schemes, he has prepared drawings, models and mood boards to translate design themes and specifications.



# Survey Division

---





**Muhammad Umar Khan**

Chief Surveyor



**Ashfaq Hussain**

Survey Engineer



**Mohammad Bilal**

Surveyor

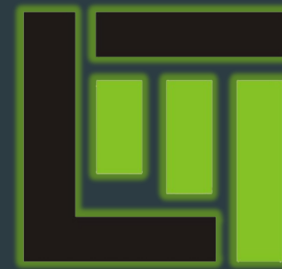


**Muhammad Taqi**

Asst. Surveyor

# M.E.P Division

---

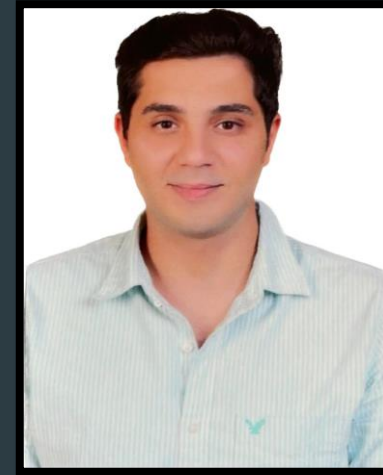




**Ahmed Salah**  
Mechanical Engineer



**Tariq Ahmed**  
Electrical Engineer



**Moamen Elhamalawy**  
Electrical Engineer



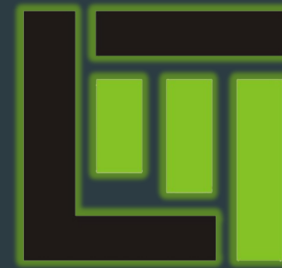
**N. Ganansekar**  
Mechanical Engineer



**Muhammad Haris**  
Electrical Engineer

# Drafting Division

---





**Swe Swe Zin**  
Architectural Draftsman



**Salman Khan**  
Architectural Draftsman



**Faizan Dawood**  
Structural Draftsman



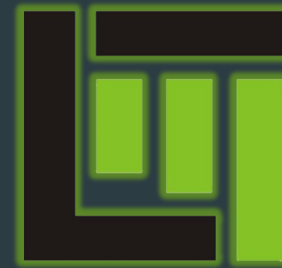
**Phyaе Htet Aung**  
MEP Draftsman



**Mohammad Shoaib Subhani**  
MEP Draftsman

# Management Team

---





**Yogita Bohara**  
Finance Manager



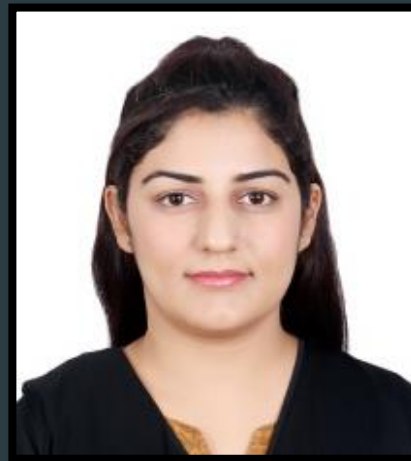
**Kashif Ali Akhter**  
Human Resource Manager



**Samreen Maqsood**  
Business Development Manager



**Pranu Basnet**  
Document Controller



**Asima Abrar**  
Front Desk Officer



**Manika Raut**  
Office Assistant





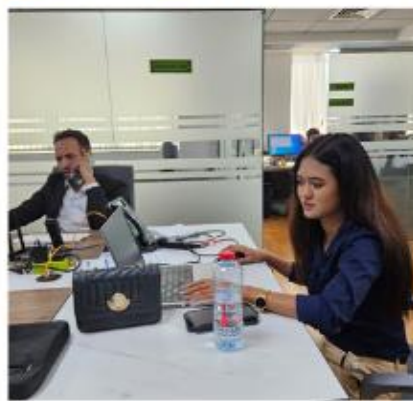
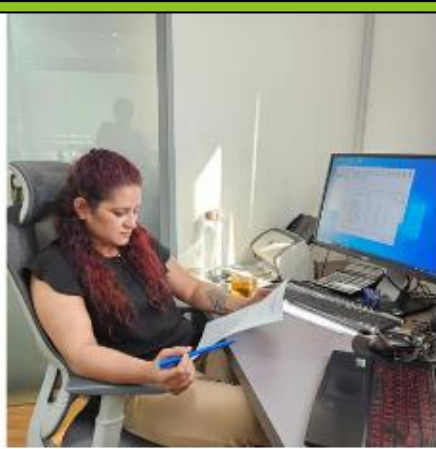
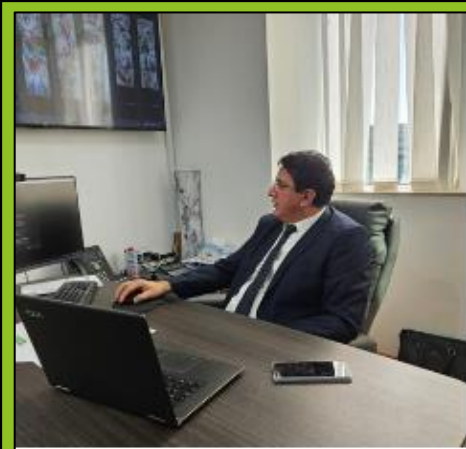
**Muhammad Junaid**  
IT Specialist



**Muhammad Farzan**  
IT Assistant



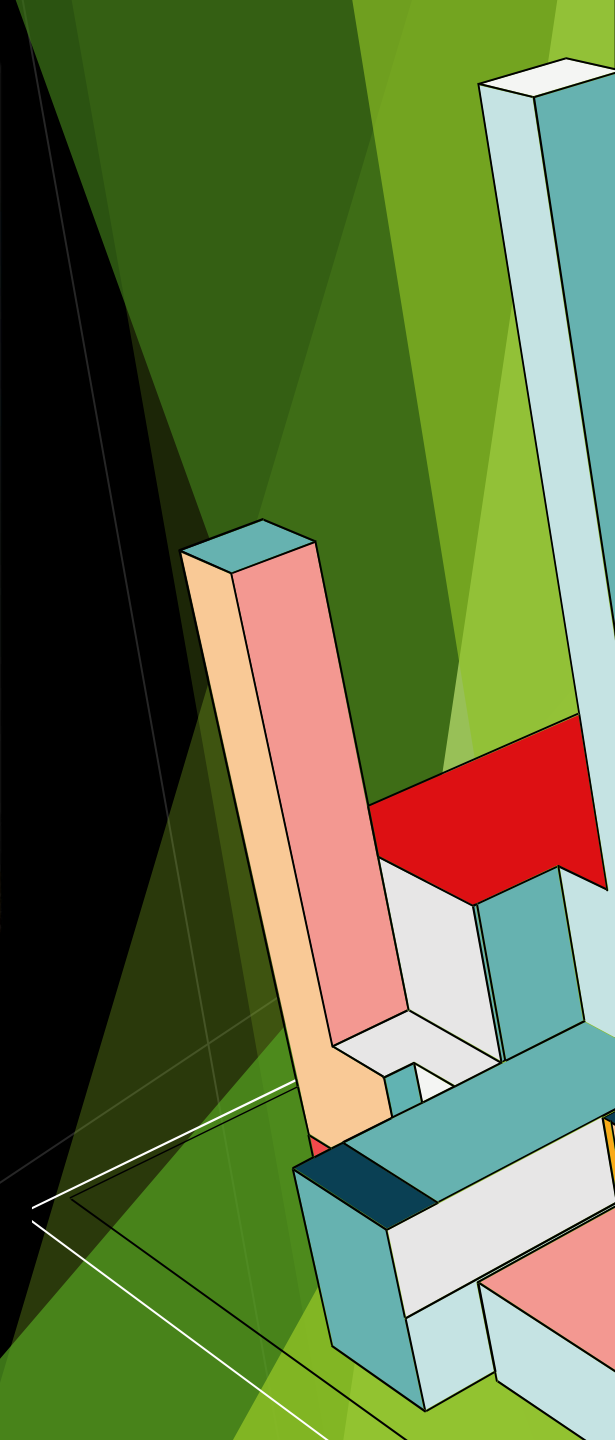
**Wangchhe Sherpa**  
Outdoor Co-Ordinator



Building Trust, Fostering Unity,  
Together We Rise

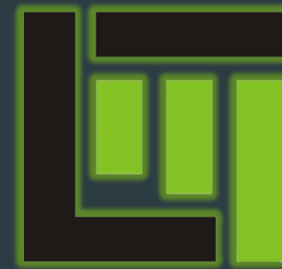


# OUR PROJECTS



# Architectural – High Rise

---

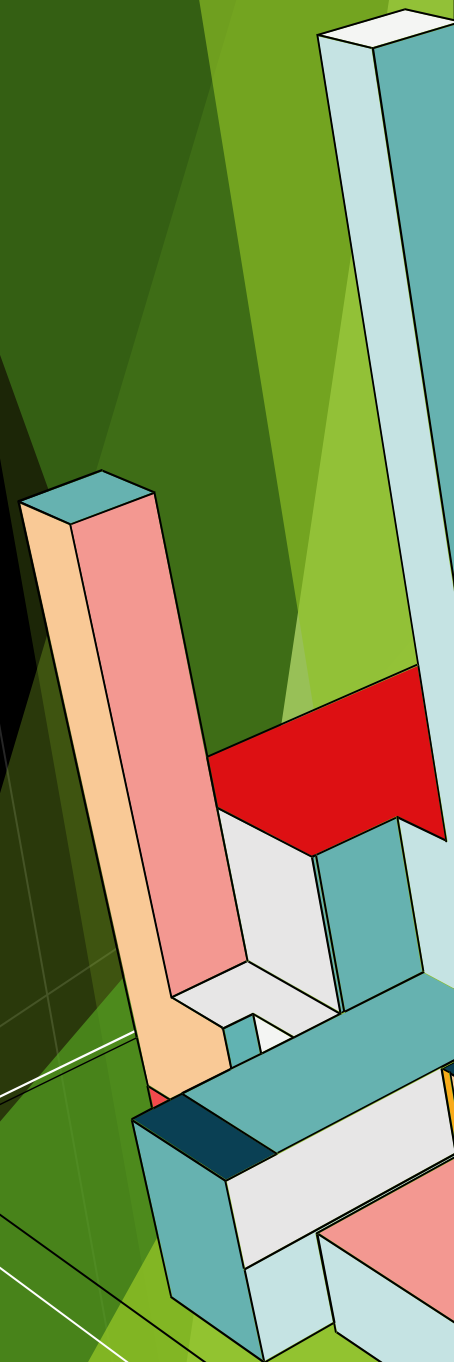




## CREEK III

Dubai, UAE  
(On-Going)

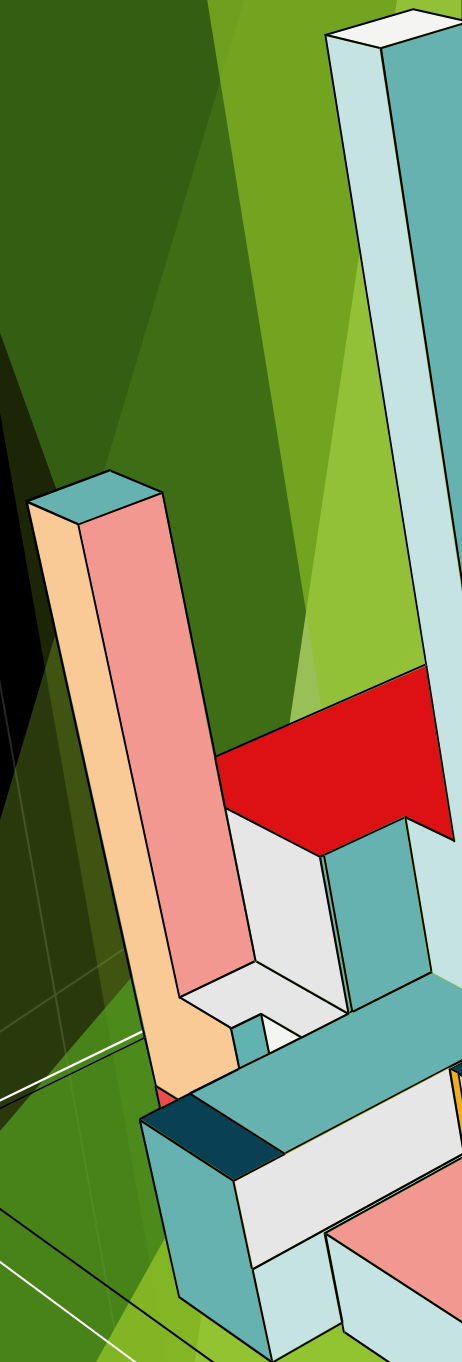
The project is a big tower with 19 residential floors, 2 podiums including parking slots, and 1<sup>st</sup> level of basement of parking. We designed wavy-shaped balconies for the façade which is inspired by the waves of the sea and at night the façade has the moonlight self-illumination which makes the design more impressive. The details of the balconies with the self-illuminated material (metacrilato) were so challenging because there was no existing project on this scale with this material on the façade, also the curved shape of the parapets makes the details more complicated. Another design consideration in this project is the height of the wavy parapets in a way that doesn't block the view of the residents and provides a good proportion for the shape of the waves, aesthetic-wise. Finally, we came up with the idea of having a 50 cm height of the opaque parapet from the flooring of the balcony and 70cm of the glass. In this case, for a person inside the apartment while sitting there is an infinite view.



## Minya Hotel Hefei Tower Hefei, China 2016 (Built)



The tallest tower will house a 5-star hotel, the others will have offices, and the base part will host a mall and some areas of the hotel. For this project, numerous versions of the façade have been created, maintaining the layout unaltered. The final choice of the customer fell on the proposal that we considered the best for simplicity and clarity of composition. The façade design is based on the delimitation of the volume takes place thanks to the treatment of the corners interrupt the continuous façade, without reducing glazed surface available, as well as the basement the attic floor. This perimeter with non-orthogonal that headlines characterizes the plasticity of the elevations, also thanks to the light color and GRC texture.



## Safa Towers

Dubai, UAE

2019

---

The Safa Tower takes place in a context in which the towers are immersed inside one of the most important parks in the city. The choice of the shape of the building is dictated by the commercial need aimed at satisfying the needs of the client who prefers small apartments, as opposed to the request by the master developer to remain within an average size of the apartments not less than 80 square meters. For this purpose, the towers have been reserved for medium and small sized apartments while the bridge that joins the two towers host the large penthouses that can benefit from a series of facilities such as private swimming pools, hanging gardens and the view of the park and the sea. From a structural point of view, the towers are characterized by the junction point between the vertical construction and the bridge. The empty junction element in fact “splits” the profile of the tower leaving room for hanging gardens and a vertical greenery. This reference to the overlooking park characterizes the building and identifies its main character. Compared with the most important and representative buildings in Dubai such as the Emirates Towers, the Burj Arab, the Burj Khalifa, the Atlantis or the Infinity Tower, it stands up to comparison and is a candidate for another icon in the skyline of the Emirate metropolis.



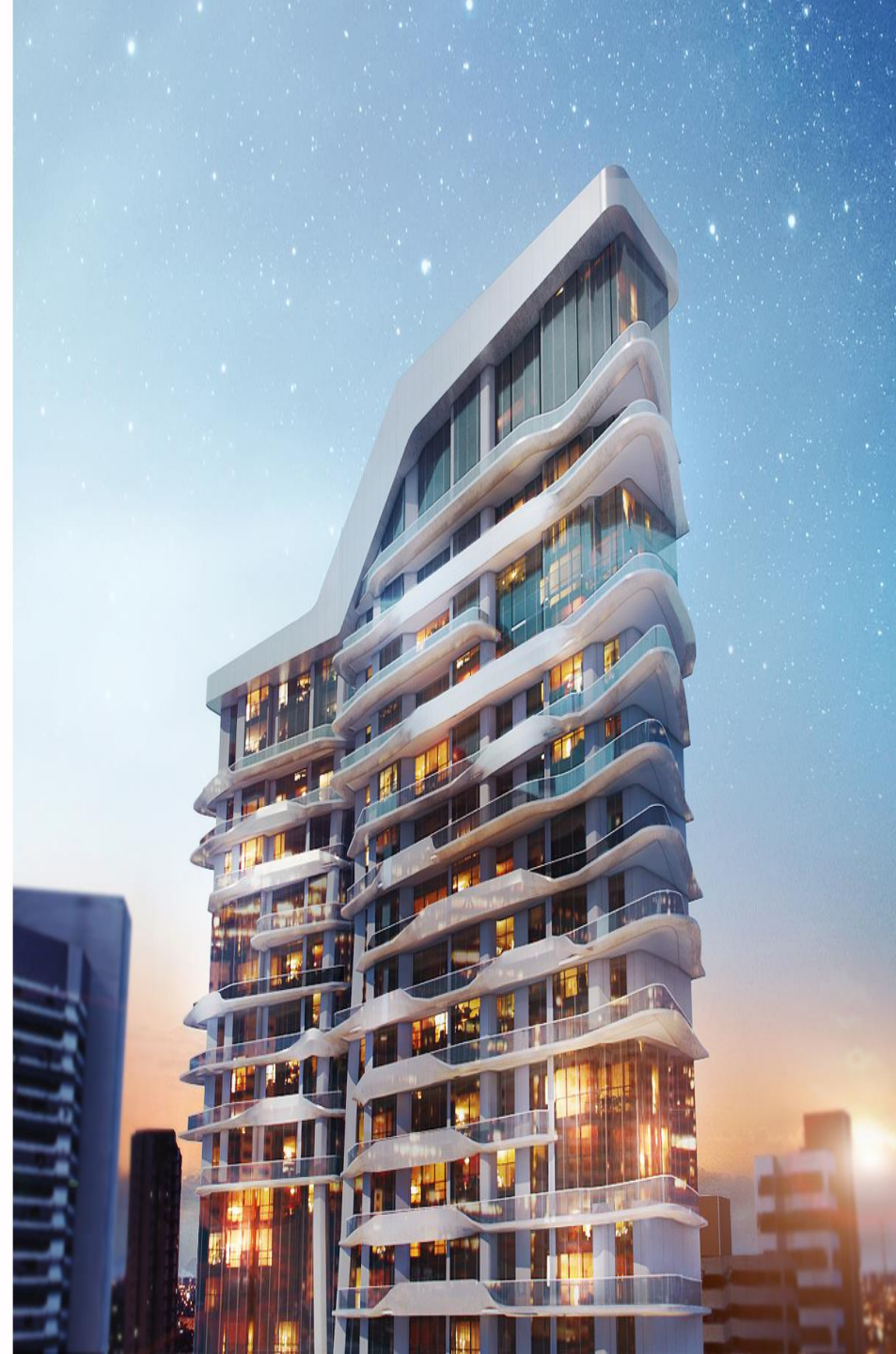
## Dom Luis Tower

Fortaleza, Brazil

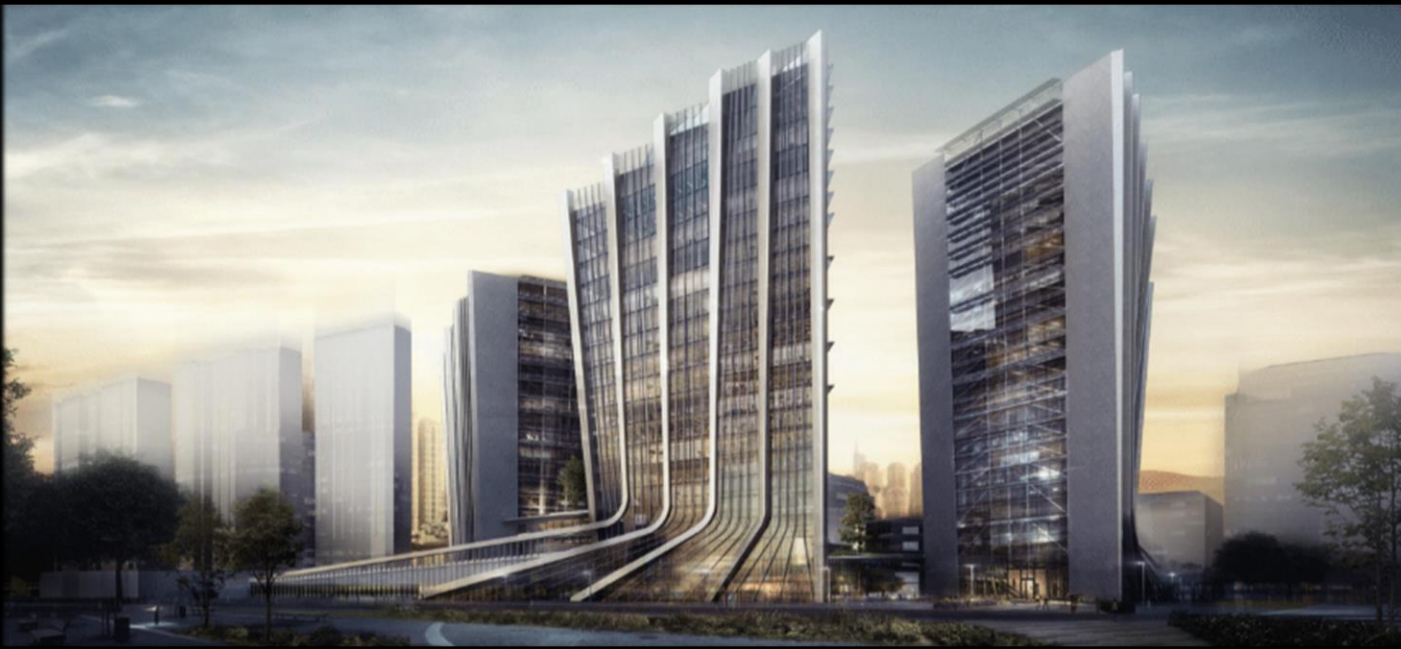
2015

---

Located in one of the main streets of the city's financial center, the Dom Luis tower has the opportunity to surprise and innovate the surrounding cityscape. In a fabric so rich in rigid and square towers the building stands out for its organic form that creates soft and harmonious volumes in stark contrast with the existing architecture. The intention to is spelled out by different materials create a complex and dynamic tower the changes in the façade where they and shapes are used, all harmonized in a continuous flow of energy. Wood, glass, plaster create a balanced mix of materials and colors. In particular, the use of glass for balustrades and large windows, also double height, create mirrors and transparencies building. That further lighten and enliven the building. The presence of commercial functions of the building opens the tower toon the lower floors the city even more, facilitating the social and architectural integration







Xinhua Complex

Langfang, China

2019

The building has a circular and peripheral layout, forming a circular square and garden at the center of the site. The southeast corner of the site faces the railway station, and the southwest corner faces the coach station. The two entrances lead to the central square on foot. The building complex forms a twin-tower landmark by the important intersection of the city in the southeast corner, and the planned high-rise buildings outside the northwest corner of the site need to be considered. Therefore, a fan-like building height change gradually decreases from the southeast to the northwest.



## Horizon Tower

Dubai, UAE

2018

---

This project is the concept for a building used as a hotel and residence. The main quality of the tower is the characterization of the balconies, present in all the apartments and rooms, through a profile that unravels and twists around the entire perimeter of the building. The result is a building that offers a new façade in Dubai, affordable and with great appeal for sales and commercial activity.



# Architectural – Mid - Rise

---





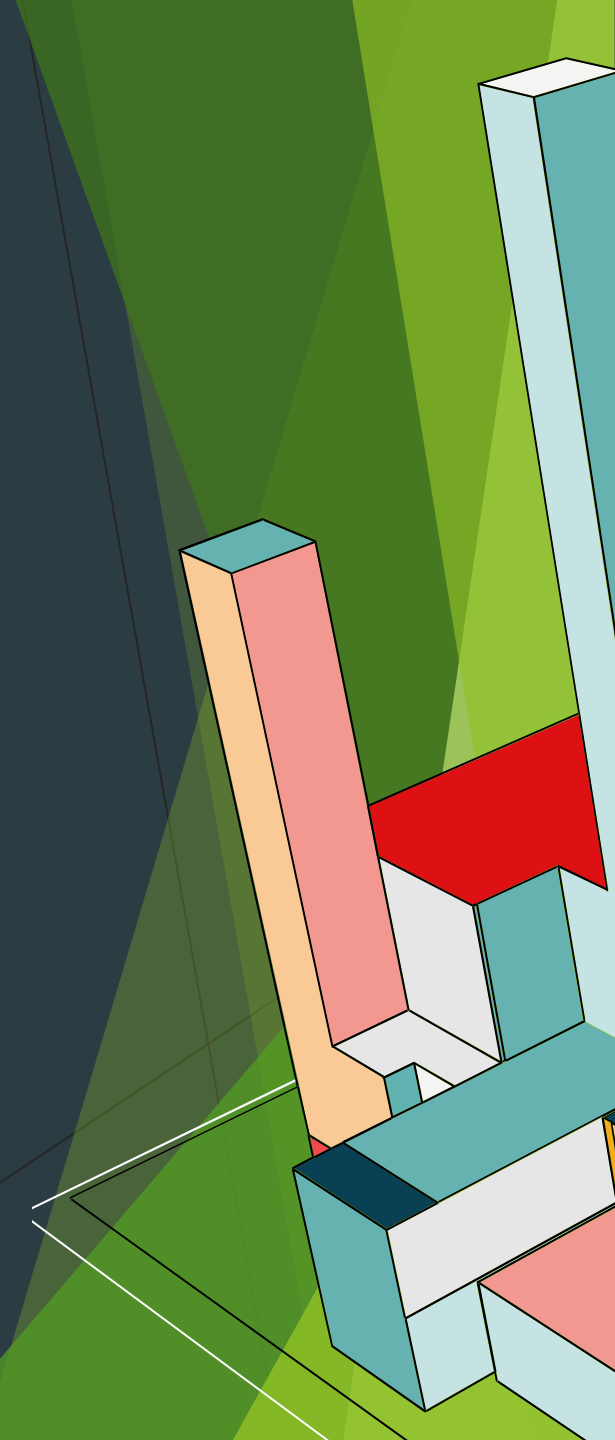
## Coneal Apartment

Belo Horizonte, Brazil

2018

---

The project, that embodies 24 high standard apartments in a building composed of 3 distinct volumes. The façade consolidated in iconic sinuous shapes, respects the topography, adapting to the terrain in a natural way and preserving the memory and the structure of the place in a creative and bold way. Thereby, comes up the perfect integration with the environment surrounded by Cural. The building explores most of the exuberant Serra do the natural light through glass opening sand balconies, creating unique views for each unit that has its exclusive pool and generous ceiling height in order to optimize ventilation and thermal comfort. The building was born out of a smart approach based on sustainability and intelligence guidelines





The Ellington project is an innovative residential and hospitality project. The two intended uses are based within a single plot and share all the facilities with each other. The rotation is dictated by the presence on the border of a building of over 30 floors which effectively obstruct the view from the rooms. A rigorous design that takes into consideration the external view defines the internal layout of the rooms and consequently of all the green spaces.



Ellington Properties

Dubai, UAE

2017

---



## Garden House

Yiwu, China

2017

---



In this Project, the composition of the volumes is designed as a prototype of a vertical house-garden, starting from the belief that the terrace can be the extension of the house. From the constructive point of view, the parapets of the balconies are the cantilever beams that allow projections of such dimensions without being invasive in the overall design of the construction.



## G+8 Proposal 1

### Jumeirah Garden City

The building facade features a modern aesthetic with clean lines and a mix of glass and metal elements, reflecting current architectural trends. The planning maximizes usable space within the site constraints, achieving an average Gross Floor Area (GFA) for similar projects in the area. The design prioritizes functionality while incorporating sustainable elements for energy efficiency.

## G+8 Proposal 2

### Jumeirah Garden City



The building facade is a bold statement of architectural innovation, featuring unique geometric forms and dynamic use of materials that set it apart from average designs. The planning is optimized to accommodate the maximum number of units within the space, surpassing typical GFA achievements. Its iconic design redefines urban living while incorporating cutting-edge sustainability features for a landmark project that stands out in its context.



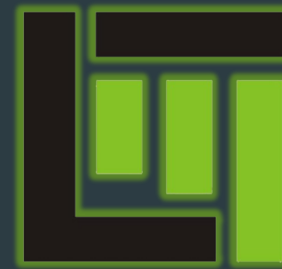
# << THE CLOUDS >>

Concept



# Architectural – Villas

---





## K Villa Private

Dubai, UAE

2022

The architectural aim of this concept was to rethink the definition of window and wall, while the technology led us to go beyond the primary form of the vertical wall. The fluid façade is a successful study of sloping walls in residential spaces. Adapting the window to wall ratio to the function behind it was the first challenge of this project.

## K Villa Private

Dubai, UAE

2022

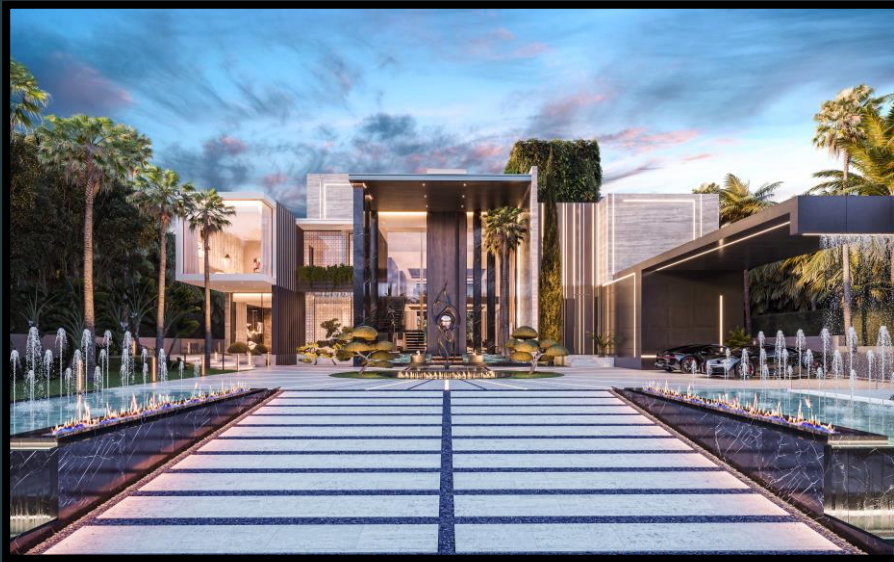
It's distinctive curved wall facade cleverly responds to the sun's direction, providing shade while facilitating cross-ventilation, thus ensuring an eco-friendly and comfortable living environment. The villa's layout is ingeniously centralized, with various living areas radiating outward from the central courtyard, fostering a sense of harmony and connection with nature through out the entire space.



# Villa Golini

Parma Italy





**Proposed B+G+1 Villa**  
**Al Barari, Dubai**

## Mr. Amit Aurora's Villa

Jebel Ali Hills, Dubai

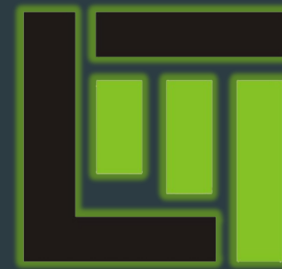
---

Step into a realm where lavishness meets affordability in perfect harmony. Despite its modest budget, this villa exudes an aura of tranquility and beauty that transcends monetary constraints. Thoughtfully curated decor and serene hues adorn the interior, inviting guests into a haven of comfort and relaxation. Here, luxury is not defined by extravagance, but by the sheer serenity of simplicity.



# Public Building

---





## Dubai Expo Brazil Pavilion

Dubai, UAE

2018

The project aims to represent Brazil as the country with the greatest biodiversity in the world due to two factors. First, due to the great extent of its green area that constitutes the Tropical Forest and second, because it has one of the most important freshwater reserves on the planet. The idea is to represent with only three elements what is reported in the thesis of great emotional impact and surprising scenography effect: water, vegetation and man. Through the composition of a space that is built around these elements, were present Brazil, its present, its actions and the future that the nation wants to build, without the need for an interpretive code: all visitors to the pavilion will immediately understand the spirit and the essence of space. A water cube, an element without which no form of animal and plant life is possible, with a tree in the center that signifies another great Brazilian heritage and also a possible source a space in which the project, lives, vegetation. Of livelihood in the future, configure man, the third element considered in moves and interacts with water and This is the spatial architectural representation of Brazil's identity and its future commitment. With the power of simplicity, but at the same time of its representativeness, we will be able to stimulate the visitor through the use of light, scenic lighting, paths and interactivity.







## Guggenheim Museum

Helsinki, Finland

2014

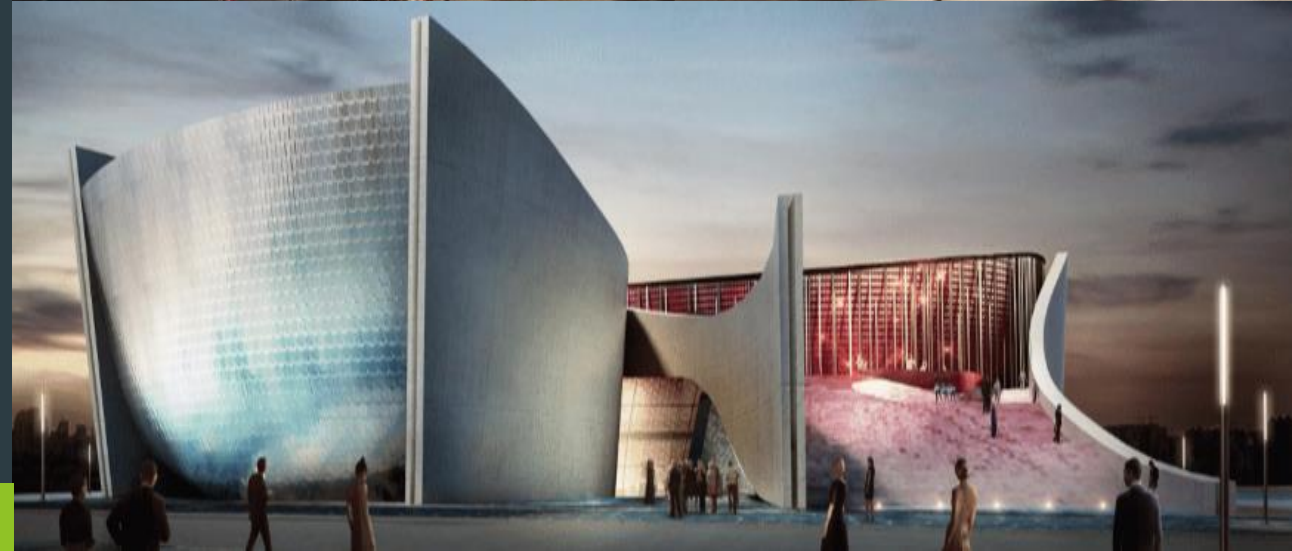
---

The project we propose for the Guggenheim museum in Helsinki is firstly a representation of the Museum of the XXI century. The concept of museum, as a container of art to be exhibited, needs to become a space that is, first of all, a public space of the city, open to the community. What allows the representation of this idea is the construction of a covered plaza, in this case, the focal point of a journey that starts from the old city to the Olympia Terminal. The inclusion of the civic place par excellence (the plaza) inside a building resumes the search of the greatest Finnish architects in the design of the covered plaza intended as a main lobby, a filter between the city and the functional space of the building itself. It is a new direction in thinking the museum that introjects innovative experiences attached to it, example, by Atelier Bow Wow. The plaza creates a space within the building that might be called “civic art space”, like the historical squares of the city: the Market Square, the political square, the religious square, where civic life meets art and culture.

Yinchuan is the famous ancient city in northwest China. The construction of a city opera is an action to highlight the great culture of the city. The difficulty of project lies in how to create new buildings to be harmoniously integrated into the historical district and conform to the historical and cultural characteristics of Yinchuan. Our design theme is "Music Ocean", and the building is like a big fish, lying on the "water surface" made of blue tiles that simulate the ocean. People can walk to the roof space between the two music over the city. From this "water surface", through the large public auditoriums and look out over the city.

**City Opera**  
**Yinchuan, China**  
**2019**

---





## Helsinki Library Helsinki, Finland

2012

The architectural form of the new library is defined in relation to the surrounding landscape, the composition of the volumes, their orientation and position are in functional of the main characteristics of the context in which they are inserted. All sides have a different characterization ground floor and the floors above, stating a close relationship with the public space. This allows the park to through the volumes the north and west to “enter” the building transparent walls of the ground floor, while longitudinally inserted in the body open up with large windows on what they want to observe: the lake to the north, the city to the south and the park to the west. The large multifunctional hall, on the other hand, leads to the view of the Parliament. We brought together some relevant functions in macro areas until we obtained six functional cores. The architectural representation of these nuclei and their penetration into the “classic” space of the library, the collections area, determined the new functional concept of a real hub of learning and sharing of knowledge.

Design Institute  
Parma Italy



D Rosa Private Clinic  
Parma Italy





## ADNOC Campus

Abu Dhabi, UAE

2019

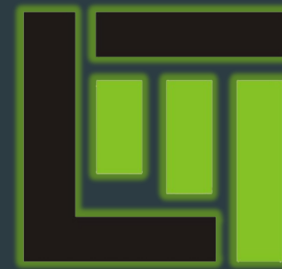
---



Our project, following a single “gesture” will represent these two ideas. As always, architecture will be used in order to make the rational thought of the designers a reality. The expected outcome of our project will be the Corporate Campus for Adnoc, i.e. the future of the company. The Campus will be a place fit for each and every use its employees, visitors and users may think about, from nationwide events to daily break business

# Hospitality

---



## Minya Hotel

Chengdu, China

2017

---

The hotel is located at an important intersection on the Second Ring Road in the south of Chengdu. It was built in the 1980s and the original façade style is relatively conservative and ordinary. We were invited to redesign the facade of the hotel's 16-story main building. A layer of metal wire mesh is hung outside the building, embedded with plexiglass panels of different geometric shapes, and 3M Dichroic film is used to make the façade undergo rich changes and generate dynamic rhythm.



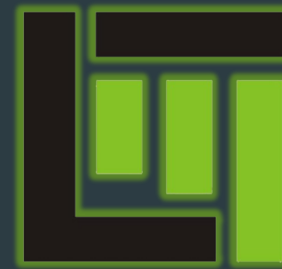


Minya hotel facade renewal - Chengdu (CHN)  
Architecture Concept design



# Masterplan

---





The project plans to regenerate the entire neighborhood near the station area through the introduction of new centralities. The bundle of tracks is not considered as a barrier anymore, but as an opportunity for urban mending, capable of linking the city with the Yellow River and the archeological area. The neighboring areas become new trading and industrial sites, high-tech, linked to university research. The redevelopment area is meant to be a driving force for a global process of enhancement and upgrading of the entire neighborhood. The proposed project aims at improving the quality of life of the inhabitants who live in the place during the different times of day.

**Baotou Masterplan**

**Baotou, China**

**2012**

Heze University

Heze, China

2016

---

The new university campus in Heze is based on the total separation of traffic and pedestrian flow. In the heart of campus, is the library landmark building place of meeting and sharing of knowledge and culture.

The architectural form of the new library is defined in relation to the surrounding landscape and aims to be a real “Landmark” building within University campus of Heze. A body of water develops all around the building enhancing its function of “sculpture” building where the traditional morphology of the library building is denied in favor of the building with a dynamic future-oriented shape. The basement is fully glazed so the park “enters” the building through the transparent walls of the ground floor to enhance the role of the building as a meeting place, a place to exchange and share learning and knowledge.



# Yueqing Masterplan

Yueqing, China

2018

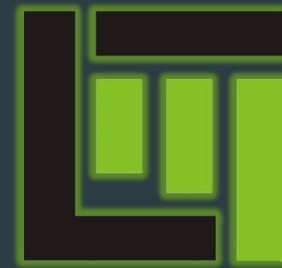
---

The peculiarity of this project is the will on the part of the customer to have a project from which the quality of Italian urban places emerges, the human scale dimension that distinguishes them and spatial organization with which they were conceived and evolved in the time. The place chosen for the future settlement is exceptional in its orographic characteristics, it is a natural amphitheater but also a device that adapts perfectly to the rules of feng shui. Starting from southern point, six half-lines fan out to identify corridors free from constructions that will allow the wind to easily reach any space, without finding obstacles in its path and creating passive cooling of the entire city.



# Interior Designs

---



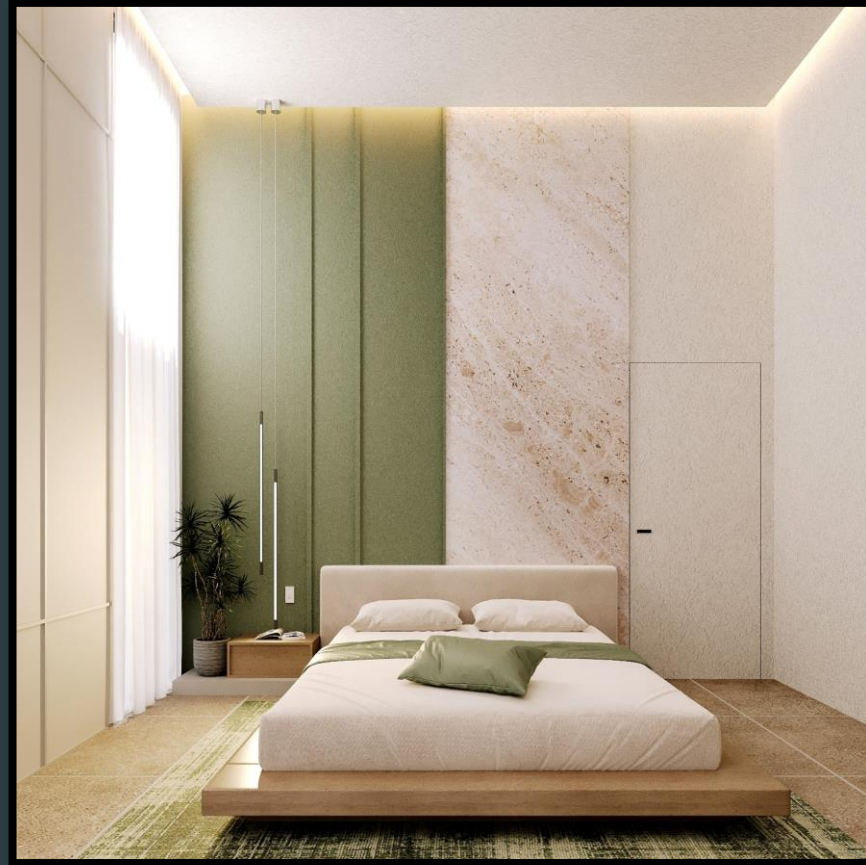
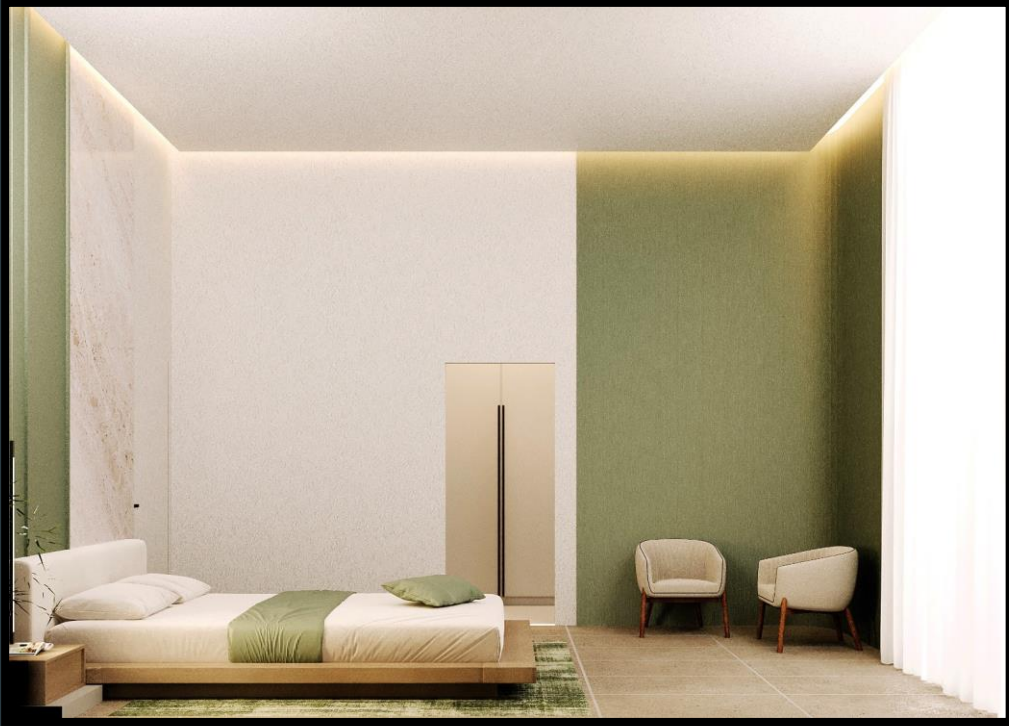








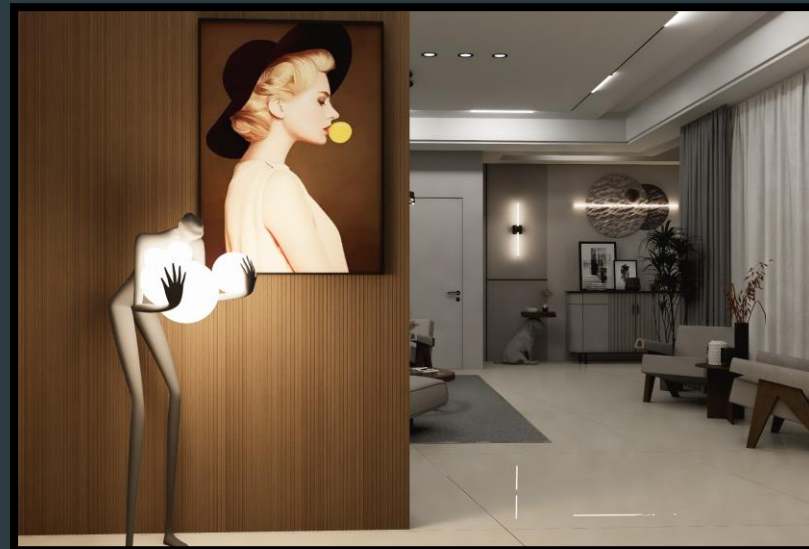


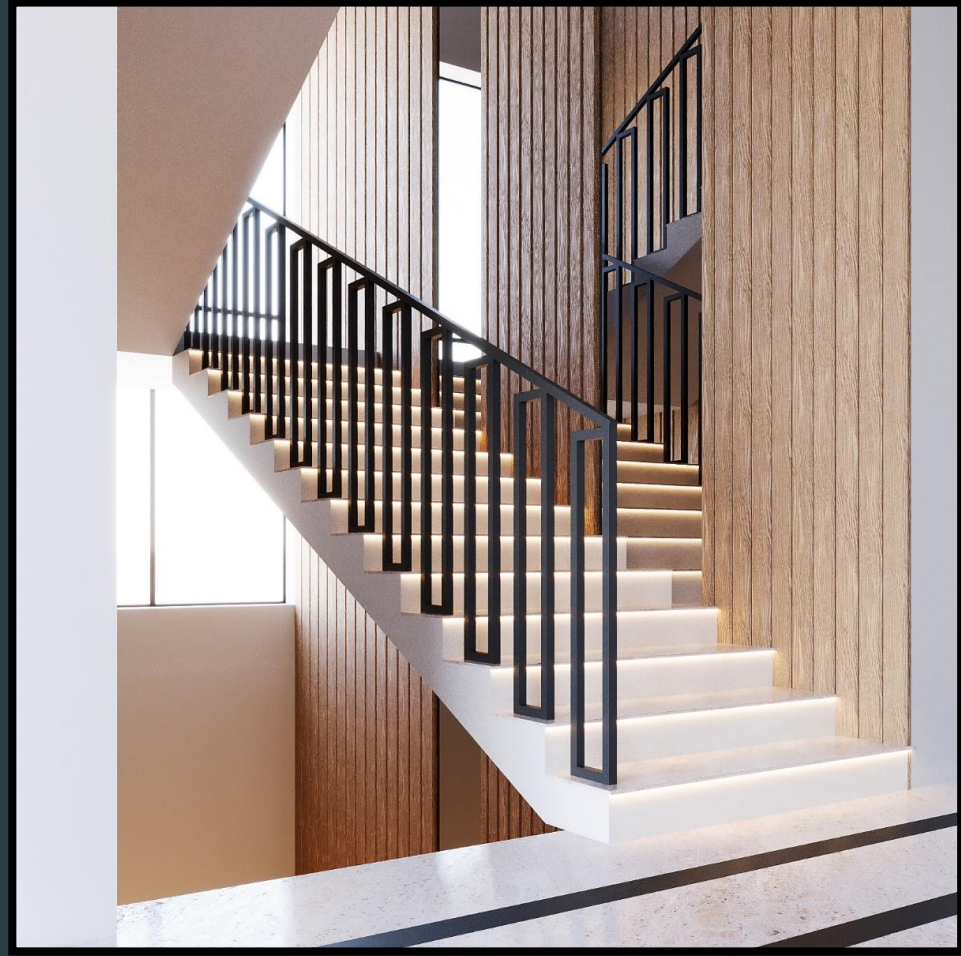
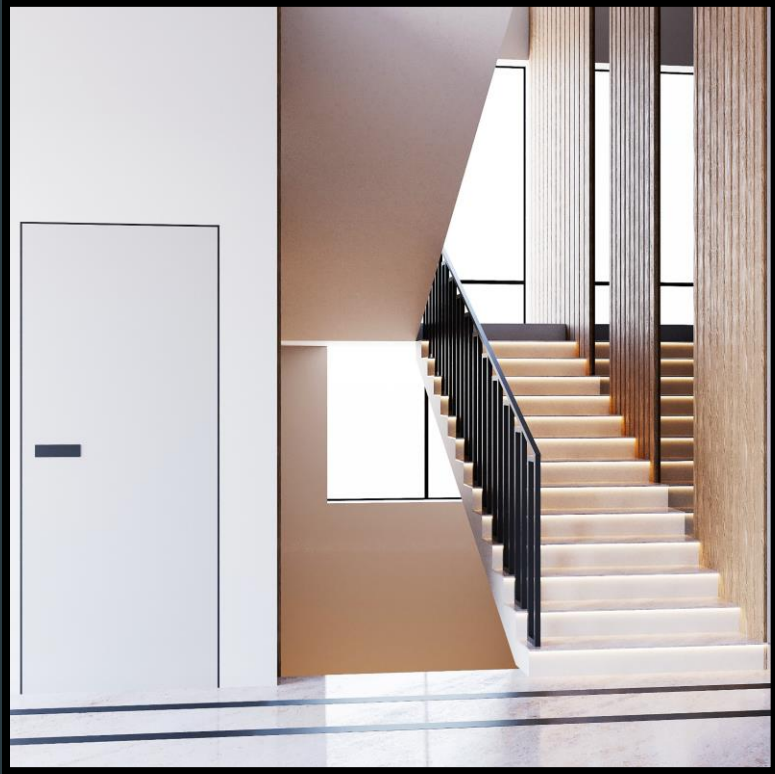






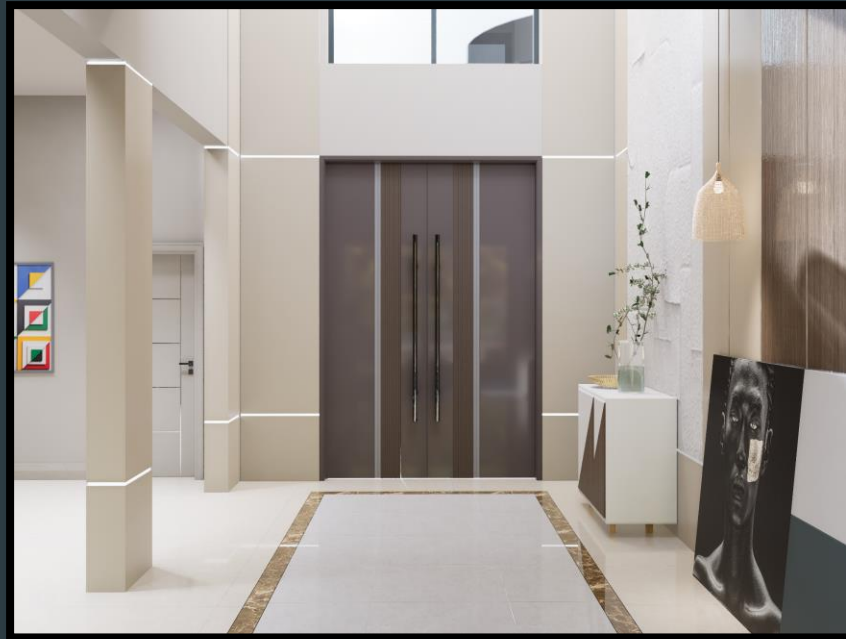






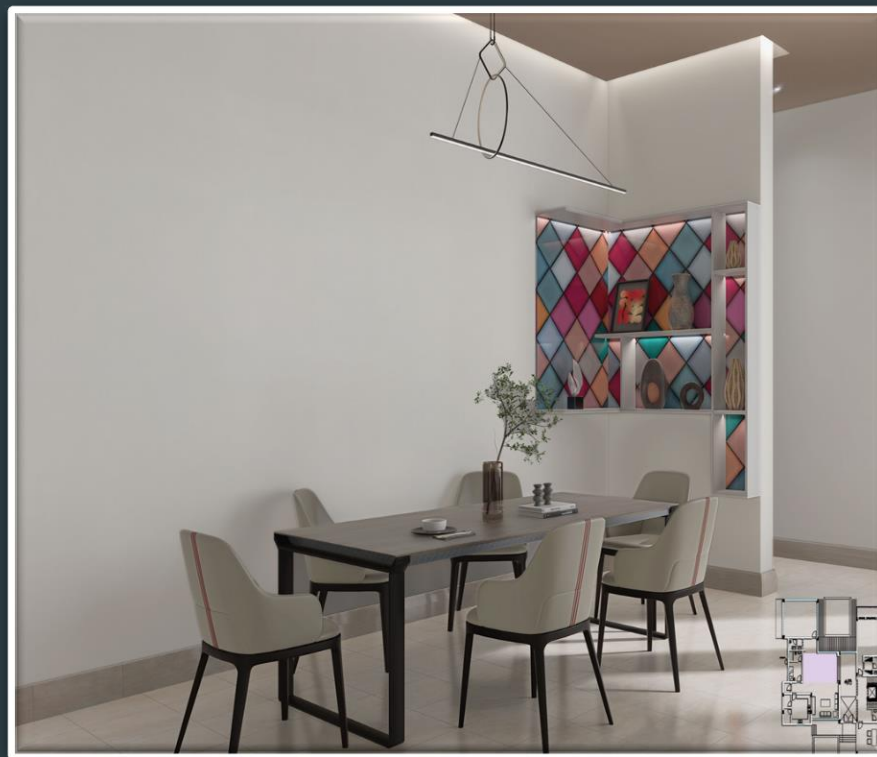






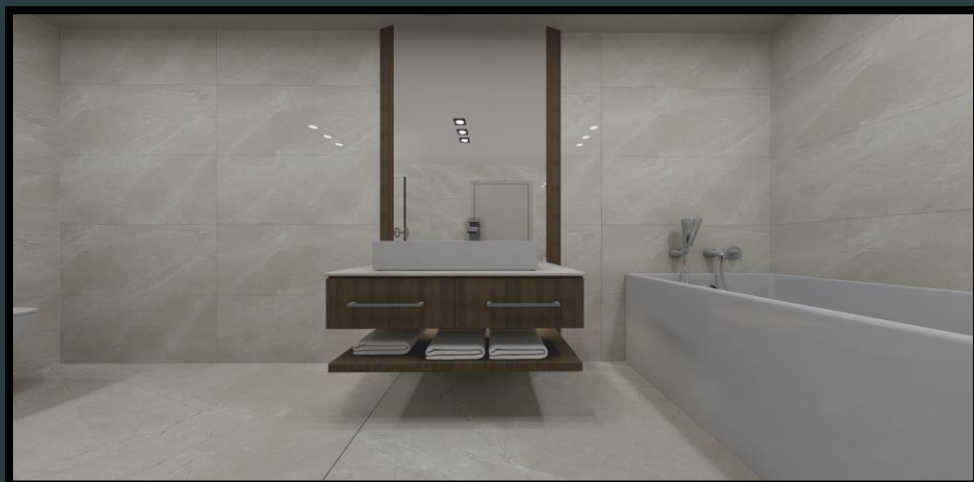
















# Living Concept Engineering Consultants

## Contact Us:

- P.O Box 60238, Dubai, UAE
- [info@livingconceptengineering.com](mailto:info@livingconceptengineering.com)
- <https://livingconceptengineering.com/>
- +971 55 993 2058
- +971 (4) 399 4778
- +971 (4) 399 5725
- +971 (4) 395 2572